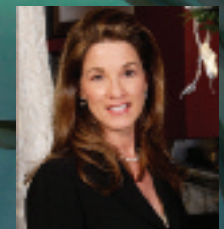


VILLA De PALMA, A SPRAWLING 'RESORT-STYLE' ESTATE OFF LAS OLAS

Though the extremely generous spirit of the sprawling estate's owner, dreams come true and people bond more closely than they could have ever imagined.

INTERIOR DESIGN Catherine Caporaso, ASID,
Brown's Interior Design, Boca Raton, 561.368.2703
PHOTOGRAPHY Ed Butera, Boca Raton
ARCHITECTURE John Payne, Fort Lauderdale



Fl State Interior Design
Lic. # ID0003640

Villa De Palma started out of a need for a “Resort Style” venue for friends, family and numerous charitable causes to gather, host fundraisers and simply relax. Though the extremely generous spirit of the sprawling estate’s owner, dreams come true and people bond more closely than they could have ever imagined. The “destination” environments created within, are equally inviting to intimate groups that often

gather in and around the “Lanai” area featured on the cover of this publication. Also popular are the beach & cabanas complete with 12’ round fire pit, the “Sahara Lounge”, the “Hacienda” style dining room, the “Sky Lounge” and the “Roof Top” terrace just to name a few.

The “**sky lounge**” (below) is one of everyone’s favorite

places to gather for a cocktail before venturing on to other venues within or going out on the town. This is truly one of those spaces that sends your spirits soaring! The white leather furnishings & bar stools with chrome and stainless accents make you feel cool even on the hottest of South Florida days and nights. The open beam ceiling is structural with LED up-lights that conserve energy while showing off the stainless steel nuts, bolts and collar ties holding this engineering masterpiece together.

This “all white” space is accented by the “weathered grey” wood grain porcelain plank tile laid on the diagonal and the “Black and White” super enlarged photos of Fort Lauderdale from a private photographers estate collection. The canoe seen in the background was constructed by children enrolled in a technical education foundation, and the white “Yacht (rope) Line” seen on the front of the bar was recovered from a ship yard. The exterior views through the floor to ceiling windows are phenomenal. And at night, include the expertly placed blue lights on the Brazilian “Ipe” wood paths across the beach, in the spa tub, water features and under the yachts.

It is hard to believe this started out as two completely separate homes. One of which, was totally demolished to allow for the creation of a Courtyard, surrounded by the new construction of a 10,000 square foot “Addition”. There are views of the Atlantic Ocean, courtyard, pool, beach, fire pit and mega-yacht-dock from almost every room and terrace! The biggest challenge was met by the newer half perfectly complementing the existing home. The collaboration of the client, designer, and architect created a seamless unity of the two “halves”. This unity encompasses the structure, the outside elements, and includes every last detail inside.

The **lanai** (previous page) can be accessed across the “beach entry” pool by “walking across water” on the permanently constructed pool pavers shown here. The area is furnished with imported Teak from Thailand. The container was filled with elements from around the world to be used within the home. The raw teak wood benches, pit-style seating, shutters and moldings were all left out in the sun to get the desired “weathered” finish before being installed. You can see the “Villa De Palma” logo of the home being repeated in the “palm tree” patterned outdoor cushions, mosaic tumbled marble dining table top and area rugs as well as the courtyard floor. In the mirror on the back wall you get a peek of the canvas colored awning above the band stand on the opposite side of the courtyard. This is where families have gathered and friends have exchanged their vows of marriage to make this an even more magical place. The visiting guests have private exterior entry to their “sunrise” or “sunset” decorated rooms through the doors seen on either side of the lanai. **CONTINUED ON NEXT PAGE**





The **dining room** features an enormous 10'-6" x 6'-6" custom-designed & manufactured table top and Southern California styled bases. The table and buffet were constructed using white oak hardwood and born out of tedious bevel detailing and in collaboration with custom-designed, hand-tooled iron work. This was a brand new endeavor made to look like it was crafted years ago and includes time-tested techniques that show the artisan's painstaking efforts. This gathering space is the beautiful heart of the home accented by the trellis with vining greens screening it from the living room on one side. The walk-in wine room under the grand stairs is cooler chilled to keep refreshments ready to be served. The Southwest-style chandelier, accessories & hand-carved leather upholstered chairs are comforting and reminiscent of the Castle Resorts seen on the La Jolla Coast line of our country.

This gathering space is the beautiful heart of the home accented by the trellis with vining greens...

The **library** (below) is designed to take you to an Ancient European Castle complete with a 60" flat screen TV built in to the wall and connected to whole house electronics. To bring you back to the world travel experience, a 1400's sepia-toned world map has been imaged onto the Ceiling. On the map, the countries are a bit abstract, but you can see the original creator was getting close with the grid marks and nautical directions.

There are also reference images on the map such as "Neptune" King of the Sea, whales, fish and mermaids. Crushed stone, castle block stucco, on the walls and an oversized replica of an old world sailing ship with its own special place, built in to the custom cabinetry, further add to the ambience. The shutters, custom cabinetry and wood tables are finished with a wood stain color to coordinate and bring unity to the room.

CONTINUED ON NEXT PAGE





The **Sahara lounge** (above) takes us to another part of the world. This room features architectural Moroccan arches and Sultan-style curved seating. The banquettes are loaded with pillows of various shapes, sizes and fabrics. Some of the fabrics included are organic Haitian cotton, Cheetah print linens, subtle gold lame' and metallic reptile print leather. The walls and ceiling are covered with three layers of an imported, organic Italian mica, which creates a creamy metallic reflective sur-

face that changes like the shifting sands as the light changes.

In keeping with the incredible glimmering sunsets of Africa, the entire mural was painted with metallic paints and contrasted with the flat umbers used for the silhouettes to offer contrast and dimension. The calligraphy was applied with hand-lettered cotton canvas, and says, "Every oasis is not a mirage, water your camels here!"

The **Sahara powder room** features a conga drum turned "sink pedestal," which leaves you reminiscing of pitching your tent in the desert for the evening and enjoying some live music! The view through the faux Moorish window reveals a scene so expertly executed you feel like walking outside! It is complete with the shadows of

The view through the faux Moorish window reveals a scene so expertly executed you feel like walking outside!



the iron railing from the sun outside coming back into the room at you. The hand-embossed silver metal door, vessel bowl, wall spout, Moorish shelf and winding cobblestone road lead its guests out of their world and to a place where they are invited to let their imaginations run wild. Villa De Palma has an infra-structure to rival many small countries. The electronics provide audio video throughout the entire home. The whole-house system also controls the lights, security, flame ignition in the fire pit and closes the black-out shades in the master bedroom when the day has finally come to an end. - END -